

Keio University Center for Preventive Medicine Opening Soon in Azabudai Hills

Will pursue advanced preventive medicine through collaborative research activities

Tokyo, November 2, 2023 — Mori Building Co., Ltd., Japan's leading urban landscape developer, announced today that the Keio University Center for Preventive Medicine operated by Keio University, one of Japan's top private educational institutions, will open on November 6 in the new Azabudai Hills complex. The expanded and relocated center will occupy 3,900 m² on the 5th and 6th floors of Azabudai Hills Mori JP Tower.

Since the establishment of the Keio University School of Medicine and Keio University Hospital, both in the early 1900s, Keio University has been a leader in research and academic studies focused on preventive medicine, which is one of the foundations of the school's medical philosophy. The Center for Preventive Medicine, which opened at Keio University Hospital in 2012 to help realize a society in which all people can live healthy, fulfilling and prosperous lives, places a high priority on supporting each patient throughout their life.

Mori Building, which believes that physical and mental health and well-being are increasingly important to urban life, adopted "Green & Wellness" as central pillars supporting Azabudai Hills, where people enjoy good physical and mental health through close connection both to people and nature, surrounded by abundant greenery in the heart of Tokyo.

Keio University and Mori Building, through the new center for preventive medicine at Azabudai Hills and in collaboration with the Hills Joint Research Laboratory for Future Preventive Medicine and Wellness, which was previously established by the two parties, will explore broad initiatives beyond the hospital framework to contribute to a society in which people enjoy healthy 100-year lifespans.

Sharing a common vision of preventive medicine and wellness, Keio University and Mori Building signed a basic agreement in March 2021 to expand and relocate the Center for Preventive Medicine to Azabudai Hills and also to open the Hills Joint Research Laboratory for Future Preventive Medicine and Wellness. Since then, the two sides have been collaborating on preventive-medicine clinical treatment and research, taking full advantage of Azabudai Hills' many urban functions for living, working and interacting, all within walking distance.



Azabudai Hills (Central Green)



Opening Ceremony (October 4th)

Kohei Itoh, President of Keio University, said: *"The Keio University Center for Preventive Medicine in Azabudai Hills will practice personalized, futuristic preventive medicine that respects and enhances patients' values to help them enjoy long and healthy lives in today's society of increasing longevity. As part of this effort, we will promote innovative preventive medicine through joint research organized by Mori Building and Keio University School of Medicine to study wellness and wellbeing, the results of which will be shared with the Azabudai Hill community."*

Shingo Tsuji, President and CEO of Mori Building, said: *"Azabudai Hills, offering diverse facilities and functions, will attract a wide range of residents, workers and visitors. We will now take on the challenge of creating better health for society as a whole. If successful, we intend to share our learnings with Japanese society and indeed the entire world. I hope that this committed collaboration between academia and city will extend beyond the boundaries of Keio University and Mori Building to contribute to the future of all humanity."*

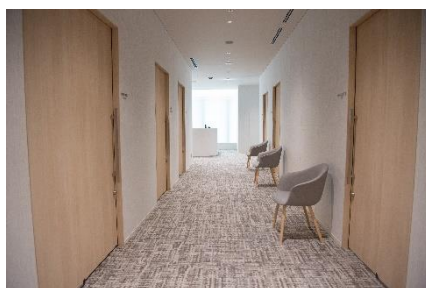
Keio University Center for Preventive Medicine

Address: 1-3-1 Azabudai, Minato-ku, Tokyo
Phone: +81-(0)3-5843-6085
Hours: 08:30–17:00, Mon.–Fri., and 2nd, 4th and 5th Sat.
Area: 3,900 m²
URL: <https://cpm.hosp.keio.ac.jp/> (Japanese only)



Personalized Examination Floor (5th floor)

Based on the concept of “medical care that follows each person's life,” personalized examinations are tailored to each patient’s individual needs. In addition to a basic course of thorough examinations aimed at early detection of lifestyle-related diseases, patients can optionally choose from eight sets of specialized tests (cardiovascular, cranial imaging, women’s health, etc.) and 19 individual option tests (PET-CT, Holter ECG, sleep apnea, etc.). A strong emphasis is placed on patient dialogue, including preliminary interviews by nurses, explanations of test results by physicians, and post-test follow-up by preventive medicine coordinators. In addition to maintaining such policies of the Preventive Medical Center, the relocated Azabudai Hills facility offers advanced equipment—virtually all of which has been upgraded with cutting-edge technologies—for high-precision medical testing.



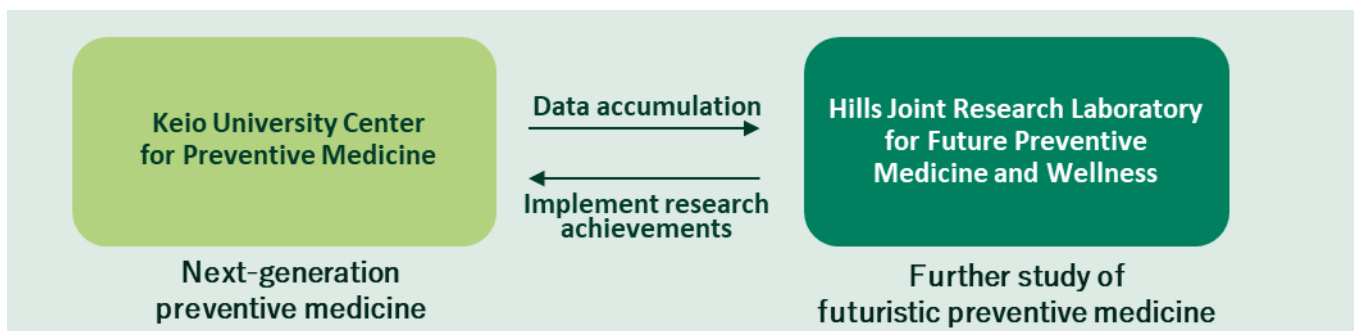
Membership Floor (6th floor)

With an eye on the future of preventive medicine, the move to Azabudai Hills marks the launch of a new member-based medical service called Preventive Medicine Membership. Under this new system, a dedicated personal support team led by a primary care physician works with each member to design a personalized health plan for everyday living that anticipates possible health and disease risks in the years ahead.

Hills Joint Research Laboratory for Future Preventive Medicine and Wellness

The Hills Joint Research Laboratory for Future Preventive Medicine and Wellness was jointly established by Keio University School of Medicine and Mori Building in April 2021 to support the realization of a society in which all people can enjoy a long life of wellness and wellbeing. The laboratory’s interdisciplinary research activities are led by two project professors, Kazuhiro Kashiwagi, a specialist in gastroenterology, and Taishiro Kishimoto, a specialist in neuropsychiatry. The laboratory will collaborate with the Center for Preventive Medicine in Azabudai Hills, including using data accumulated by the Center to develop future preventive medicine for social implementation.

<https://keiordcpm.jp/> (Japanese only)



Cooperation between the Center for Preventive Medicine and the Joint Research Laboratory

References

“Mori Building to Open Azabudai Hills on November 24, 2023” (August 8, 2023)

<https://www.mori.co.jp/en/company/press/release/2023/08/20230808113000004513.html>

“Keio University and Mori Building Conclude Basic Agreement Aimed at Realizing a Healthier and More Active Society — Agreement Includes Relocation and Expansion of Center for Preventive Medicine to Toranomon-Azabudai Project Site and Launch of Joint Research” (March 30, 2021)

<https://www.keio.ac.jp/en/press-releases/2021/Mar/30/49-78961/>

About Mori Building

Mori Building is an innovative urban developer based in Tokyo. The company is committed to maximizing the magnetic power of cities by creating and nurturing safe, sustainable and cosmopolitan urban centers based on its unique Vertical Garden City concept of high-rise centers for business, education, leisure and residence. The concept is applied in the company’s many leading-edge projects, including ARK Hills, Roppongi Hills and Toranomon Hills in Tokyo and the Shanghai World Financial Center. Mori Building is also engaged in real estate leasing, project management and consultation. Please visit www.mori.co.jp/en

Inquiries about Center for Preventive Medicine

Keio University Office of Communications and
Public Relations

+81 (0)3-5427-1541

m-pr@adst.keio.ac.jp

Inquiries about Joint Research Laboratory

Keio University School of Medicine

Taishiro Kishimoto, Project Professor

+81 (0)3-5363-3219

<https://keiordcpm.jp/> (Japanese only)

Inquiries about Azabudai Hills

Public Relations, Mori Building Co., Ltd.

+81 (0)3 6406 6606

koho@mori.co.jp

Weber Shandwick Japan

Aiko Suenaga (+81 (0)80 2169 5147)

Mayuko Harada (+81 (0)90 9006 4968)

Masashi Nonaka (+81 (0)80 1037 7879)

moribldg@webershandwick.com